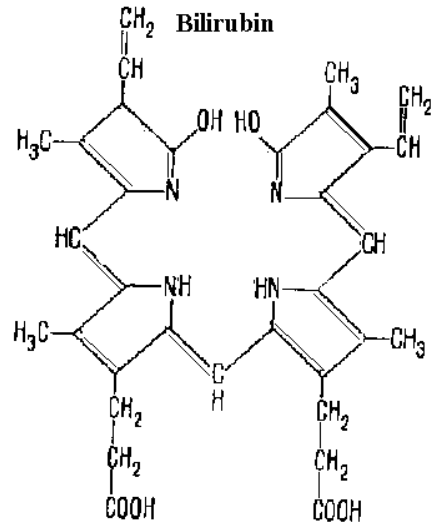
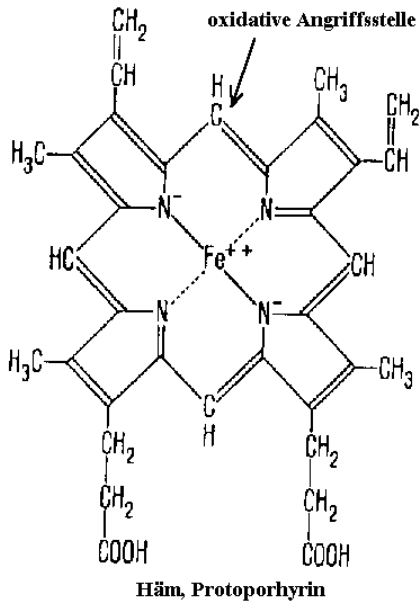
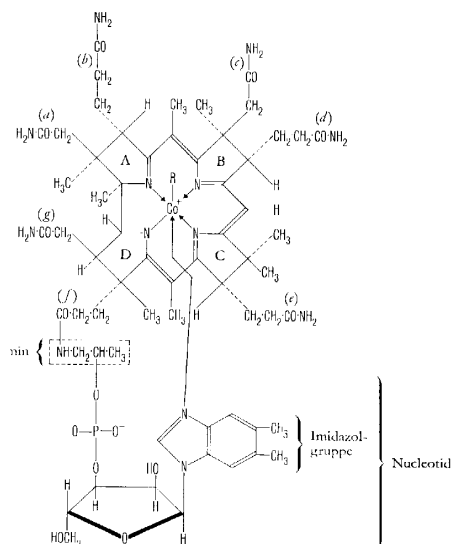
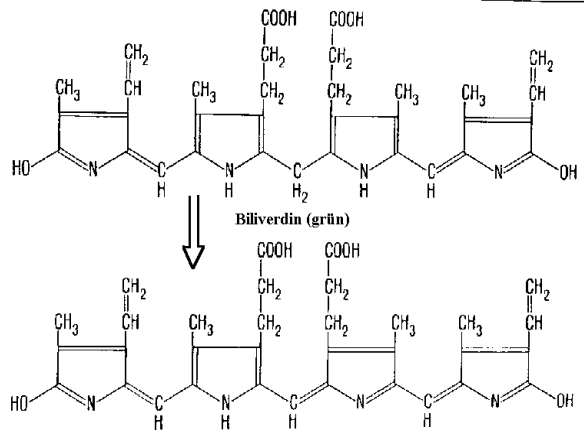
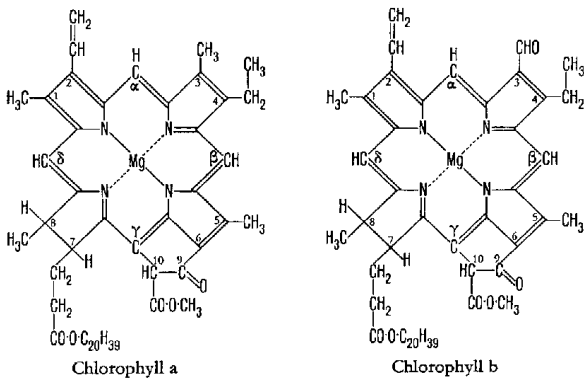


PORPHINE

Ringsystem mit 4 Pyrrolringen - im Blut-, Blattfarbstoff, Gallenfarben usw. - sehr stabil, als „chemisches Fossil“ auch in Erdöl, Zentralatom durch Cu, Ni, Cr, V ersetzt.



Bilirubin (gelb, bilia lat.= Galle)



Vitamin B₁₂, Cobalamin